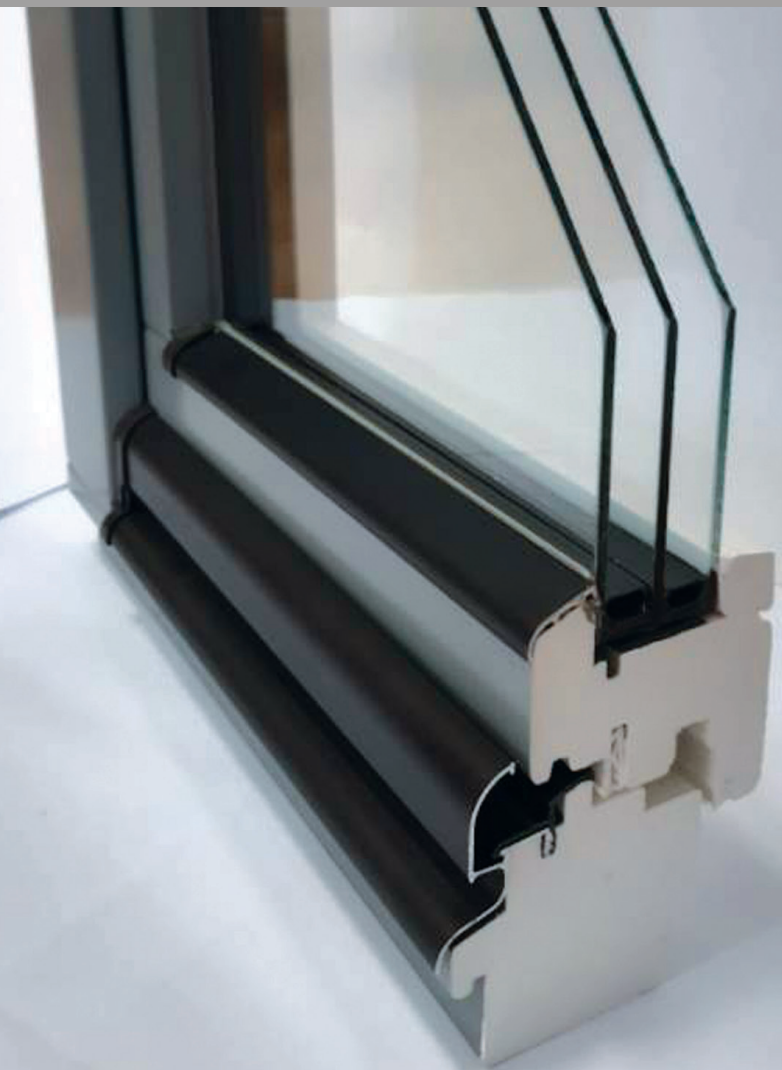




**WINDOWSFACTORY**  
INNOVATIVE MANUFACTURER

## → IV78 WOODEN WINDOW

Inward opening window profile system developed in Germany. The window system has excellent thermal and sound insulation properties, high durability against rain and wind loads, high airtightness.



### Frame and sash materials

Length jointed pine.

Also available: American Oak, Sapelli, Meranti, Siberian Larch etc.

### Frame and sash thickness (embedment depth)

78 mm

With and without the internal and external window sill groove.

### Glazing

24 mm - 42 mm thick glass packets.

### Fittings

ROTO, Siegenia. Safety class up to RC3.

Hidden and visible fittings.

Sash weight up to 300 kg and height up to 3 m.

Handles – ROTO, Hoppe, Fab&Fix, FSB, Greenteq etc.

### Finishing

Standard 20 lacquer shades and coating colours according to RAL and NCS catalogues. The finishing materials are eco-friendly and water-based.

Manufacturers – Sikkens and Teknos.

### Aluminium drain gutter

Manufacturer – Aluron, Gutmann and BUG.

Six standard shades available.

Material – aluminium.

### Additional

Ventilation valves, child safety and alarm systems.

Window heat transfer  $U_w$  coefficient  
(window size 1230x1480 and TGI gasket)

Glazing $W/(m^2K)$		Pine	Oak	Sound insulation
4/14/4/14/4	$U_g=0,6$	0,95	1,0	32dB
	$U_g=0,7$	1,0	1,1	33dB



SIA "WINDOWS FACTORY"  
WWW.WINDOWSFACTORY.LV  
export@windowsfactory.lv



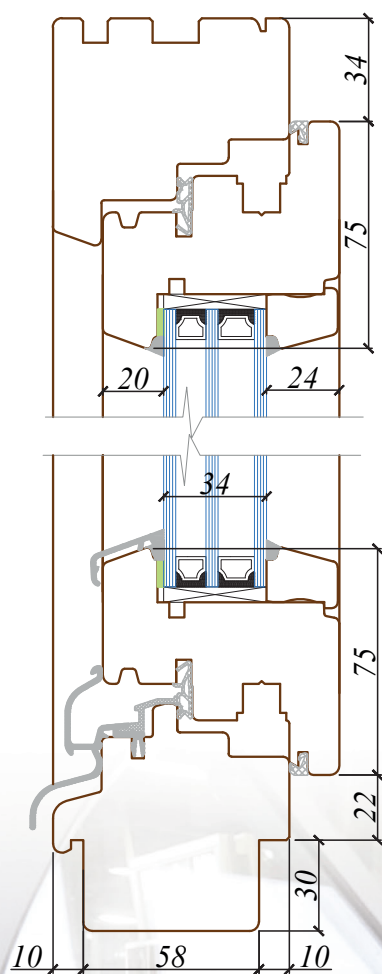
**WINDOWSFACTORY**  
INNOVATIVE MANUFACTURER

# PRODUCTION OF WOODEN WINDOWS

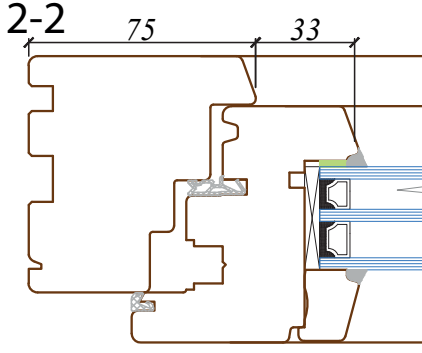


## IV78 WOODEN WINDOW

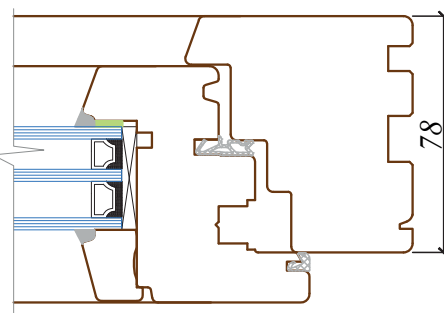
1-1



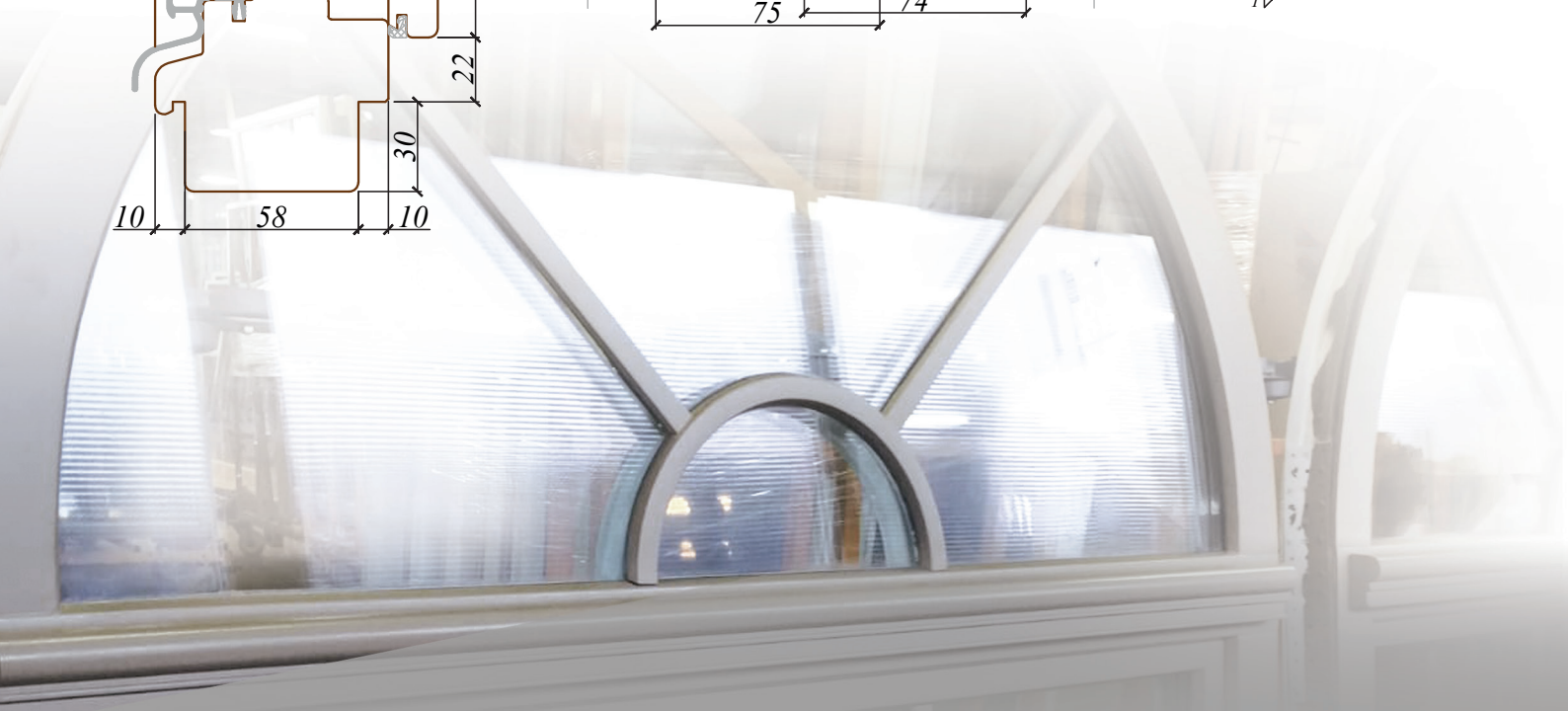
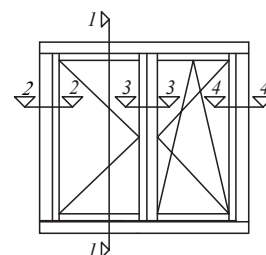
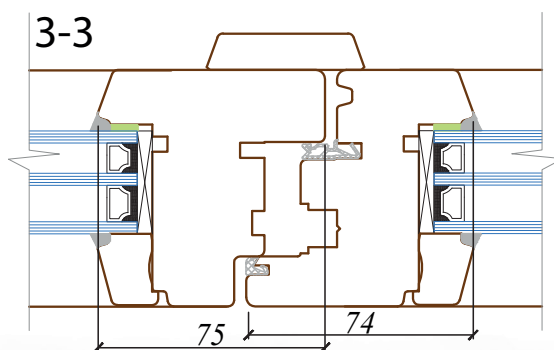
2-2



4-4



3-3



SIA "WINDOWS FACTORY"  
[WWW.WINDOWSFACTORY.LV](http://WWW.WINDOWSFACTORY.LV)  
[export@windowsfactory.lv](mailto:export@windowsfactory.lv)